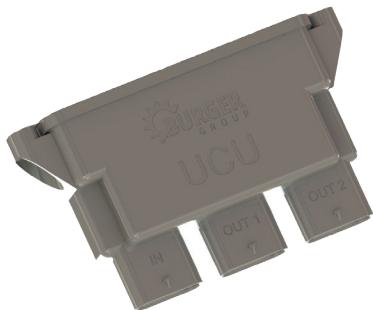


11798 - Control Unit



- _ 12 V / 24 V
- _ LIN / CAN
- _ Integration of existing „non smart,, products in a BUS system
- _ Intelligent current load balancing when controlling multiple actuators to avoid overloads
- _ up to 14 Devices (Actuators, Pumps, ...)
- _ Modular housing, electronics, and software package